



**SECOND HAND REVAMPED AS NEW
SLITTING LINE 1000 x 0,30÷3,00 mm
12,5 Ton capacity,
with DOUBLE HEAD SHEAR**



Slitting line 0.30 – 3 mm x 1000 – 12,5 ton
SECOND HAND – REVAMPED AS NEW

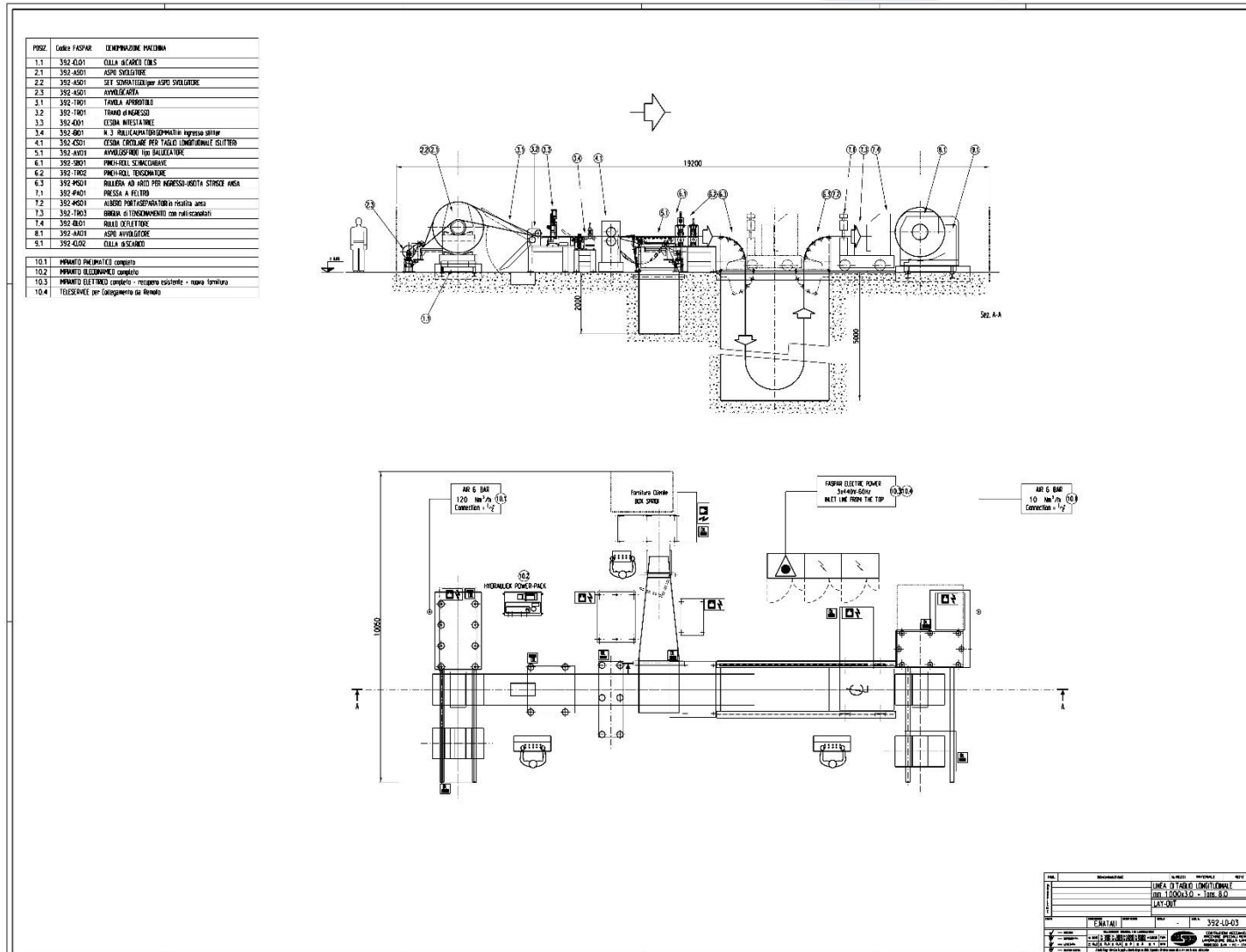
GENERAL DESCRIPTION:

- Thickness range	: mm	0,30 ÷ 3,00
- Tensile strength	: N/mm ²	450
- Coil max width	: mm	1000
- Coil max weight in entry and exit	: kg	12500
- Coil max outside diameter in entry and exit	: mm	1650
- Coil inside diameter on decoiler	: mm	508 and 610 with spacers
- Coil inside diameter on recoiler	: mm	508
- Line max speed	: m/min	150
- Feeding speed	: m/min	10
- Working direction	:	Left to Right
- Number of cuts with thickness mm 0,30 - 0,80	: n.	35
- Number of cuts with thickness mm 1	: n.	27
- Number of cuts with thickness mm 1,5	: n.	13
- Number of cuts with thickness mm 2	: n.	7
- Number of cuts with thickness mm 2,5	: n.	4
- Number of cuts with thickness mm 3	: n.	3
- Min. width of processed strip	: mm	20

LINE COMPOSITION:

Item 1.1	COIL LOADING CAR
Item 2.1	DECOILER
Item 2.2	N. 1 SET OF SPACERS FOR DECOILER
Item 2.3	PAPER WINDER
Item 3.1	COIL OPENING TABLE
Item 3.2	ENTRY PINCH ROLL
Item 3.3	CROP SHEAR
Item 3.4	N. 3 RUBBERIZED STABILIZING ROLLS
Item 4.1	DOUBLE HEAD SLITTING SHEAR (shafts \varnothing140 mm)
Item 5.1	SCRAP BALLER
Item 6.1	BURR MASHING PINCH-ROLL
Item 6.2	TENSIONING PINCH ROLL
Item 6.3	ARCHED ROLL TABLES
Item 7.1	FELT PRESS ON CARRIAGE
Item 7.2	SEPARATORS DISCS HOLDING SHAFT ON CARRIAGE
Item 7.3	TENSIONING BRIDLE ON CARRIAGE
Item 7.4	DEFLECTING ROLL ON CARRIAGE
Item 8.1	RECOILER
Item 9.1	COIL UNLOADING CAR
Item 10.1	PNEUMATIC PLANT
Item 10.2	HYDRAULIC PLANT
Item 10.3	ELECTRIC PLANT
Item 10.4	TELE-SERVICE for remote assistance
Item 11	SAFETY FENCES
Item 12	CUTTING TOOLS

LAY OUT DRAWING:



PICTURES OF THE LINE:

Slitting line 0.30 – 3 mm x 1000 – 12,5 ton
SECOND HAND – REVAMPED AS NEW



Slitting line 0.30 – 3 mm x 1000 – 12,5 ton
SECOND HAND – REVAMPED AS NEW

