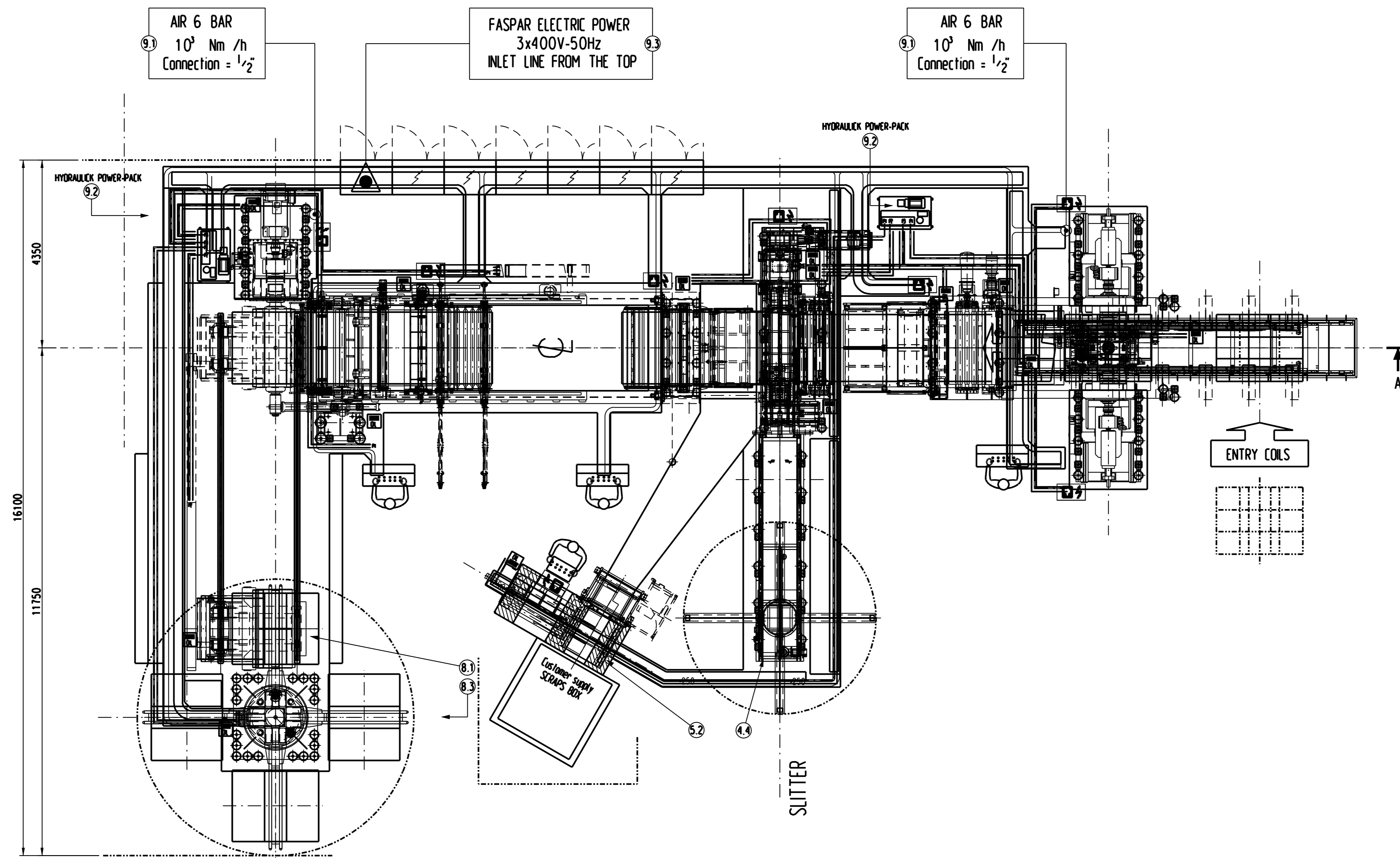
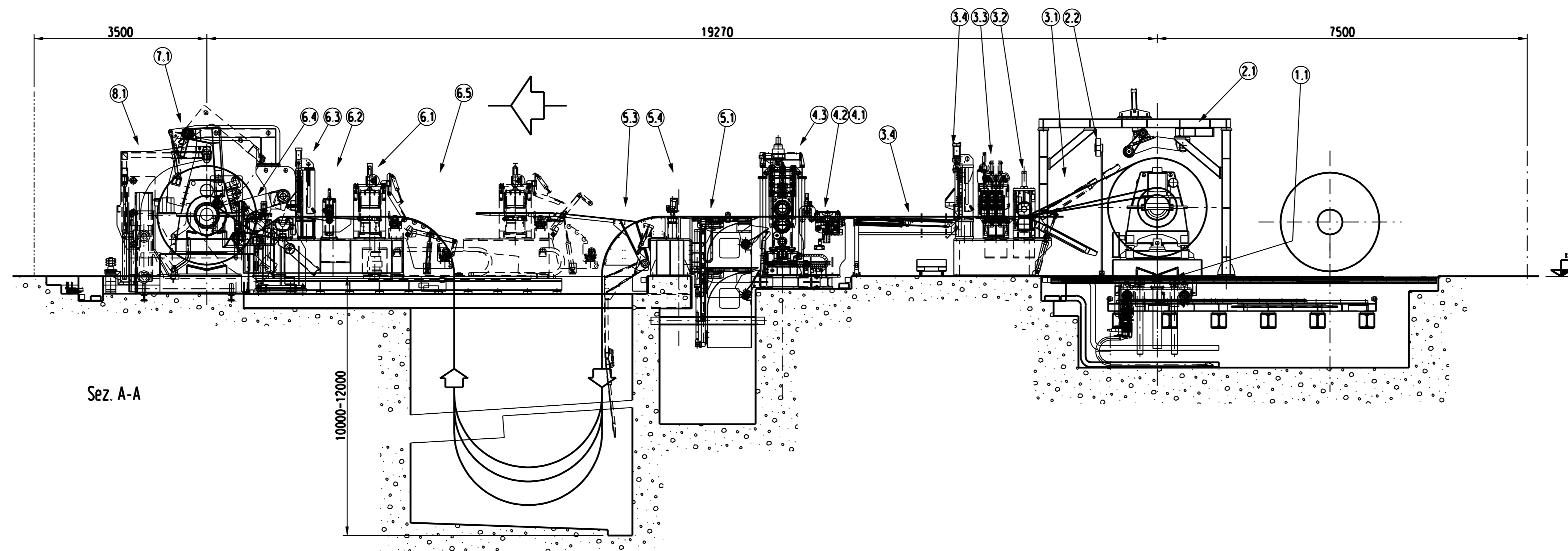


| POSITION | FASPAR   | MACHINE DESCRIPTION                                      |
|----------|----------|--|
| 1.1      | 380-CL01 | LOADING COIL CAR   |
| 2.1      | 380-AS01 | MOTORIZED RECOILER with OPPOSITE DOUBLE CONES SYSTEM     |
| 2.2      | 380-AS01 | AUTOMATIC CONTROL ALIGNMENT SYSTEM                       |
| 3.1      | 380-TR01 | PEELER UNIT (ANGLED and TELESCOPE TABLE)                 |
| 3.2      | 380-TR01 | PINCH-ROLL   |
| 3.3      | 380-TR01 | STRAIGHTENER   |
| 3.4      | 380-TR01 | HYDRAULIC SHEAR  |
| 4.1      | 380-RO01 | INTRODUCTION ROLLS TABLE FOR HEAD COILS PASSAGE          |
| 4.2      | 380-GO1  | DRIVING GROUP IN THE ENTRY SHEAR                         |
| 4.3      | 380-ES01 | SPLITTER   |
| 4.4      | 380-GL01 | CAROUSEL WITH 4 ARMS FOR BLADE REPLACEMENT               |
| 5.1      | 380-MS01 | SCRAP CONVEYOR   |
| 5.2      | 380-MS01 | SCRAP RECOILER ROLL BALER                                |
| 5.3      | 380-MS01 | HYDRAULIC TABLE FOR ACCOMPANYING THE STRIPS OVER THE PIT |
| 5.4      | 380-MS01 | PRESS FELT   |
| 6.1      | 380-PM01 | TENSION UNIT WITH FELT                                   |
| 6.2      | 380-TR02 | FEEDING PINCH-ROLL                                       |
| 6.3      | 380-TR02 | HYDRAULIC SHEAR IN EXIT FOR REDUCING COIL                |
| 6.4      | 380-DR01 | DEFLECTOR ROLL   |
| 6.5      | 380-EP01 | BROWNING MOTORIZED CHART                                 |
| 7.1      | 380-AR01 | RECOILER   |
| 8.1      | 380-CL02 | EXIT COIL CAR  |
| 8.3      | 380-GL01 | TURNTABLE WITH 4 ARMS FOR COIL UNLOADING                 |

|     |                         |
|-----|-------------------------|
| 9.1 | PNEUMATIC UNIT complete |
| 9.2 | HYDRAULIC UNIT complete |
| 9.3 | ELECTRIC UNIT complete  |



| POS.  | DENOMINAZIONE  | AL. PEZZI  | MATERIALE | NOTE      |
|---|--|--|-----------|-----------|
|   | COMPLETE SLITTING LINE   |  |           |           |
|   | mm 1550x4.0 - Tons. 25   |  |           |           |
|   | LAY-OUT  |  |           |           |
| DISEGNO   |  | VERIFICATO   | SCALA     | DIR. N.   |
| L. CORNA  |  |  |           | 380-LO-02 |
| ✓ DISEGNO<br>✓ SOMMARIATO<br>✓ LAVORATA<br>✓ VERIFICATA | Tolleranze generali di lavorazione<br>< 100 ± 0.10   100 - 300 ± 0.15   300 - 500 ± 0.20   500 - 1000 ± 0.30   > 1000 ± 0.40 | COSTRUZIONI MECCANICHE<br>MACCHINE SPECIALI PER LA<br>LAVORAZIONE DELLA LAMIERA<br>ROBECCO S.p.A. - ME - ITALY |           |           |